

neopost 



DS-63

YOUR MAIL MANAGEMENT PARTNER

An easy-to-use desktop folder inserter
that can be used to process all your mail



WE VALUE YOUR MAIL



neopost

DS-63

A DEPENDABLE ALL-IN-ONE MAIL MANAGEMENT SOLUTION

The DS-63 is able to quickly and automatically process all standard mail management services as well as direct marketing applications. This is achieved thanks to an easy-to-use graphic touch screen and highly developed ergonomics. Designed on the basis of a tried and tested platform, it is 100% reliable. Your mail will be processed on time, every time. Combined with our output management solutions (OMS) featuring grouping, sorting and splitting capabilities, the DS-63 will optimize your mail flow and contribute to significant cost savings.

TOUCH SCREEN

The 5.7" color display provides an intuitive wizard-based user interface for ease-of-use.



ENHANCED EASE OF USE

The DS-63 is equipped with a 5.7" graphic touch screen that makes it easy to use and allows applications stored in the memory to be accessed quickly. A step-by-step wizard allows all users to define settings for their applications and store them in the memory for job recall.

The DS-63 is a model of ergonomic efficiency and as such is well suited to automated processing. Additionally, its compact size and low noise level make it suitable for use in every work environment.

MAXIMUM FLEXIBILITY FOR YOUR APPLICATION

The DS-63 can be configured in several different ways and adapted to meet your every need. This versatility will automate your transactional mail targeted at customers and prospects to further develop your business activity. The flexFeed® function processes all document sizes including inserts, reply forms and return envelopes.

Additionally, the manual mail function allows you to process both stapled and unstapled mail that may contain a variable number of documents depending on the recipient.

ALL-IN-ONE MAIL MANAGEMENT SOLUTION
GRAPHIC TOUCH SCREEN – FOR INTUITIVE USE
POWERFOLD™ – FOR PROFESSIONAL FOLDING
FLEXFEED® – TO PROCESS EACH AND EVERY ONE OF YOUR MAIL MANAGEMENT APPLICATIONS
LOW NOISE LEVEL AND COMPACT SIZE – TO SUIT EVERY WORK ENVIRONMENT



FLEXFEED®

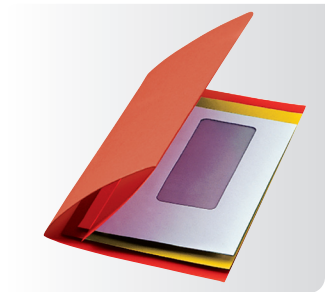
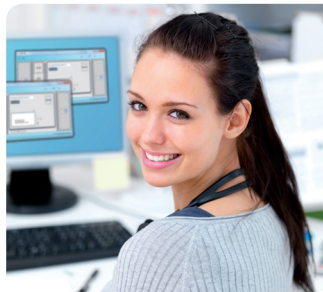
flexFeed® feeders accommodate a wide variety of paper sizes



INTEGRATED PROCESS

Combined with Neopost's OMS solutions, the DS-63 will be able to achieve cost savings for you by automating variable page document preparation, thus avoiding manual handling and errors.

With our insert'n Mail™ solution, you can automate your total mail flow by interfacing the DS-63 to a Neopost mailing system.



MAXIMUM SECURITY

The DS-63 is also able to automate the processing of mail that contains a variable number of documents. The OMR scanner system allows you to automate the assembly of documents to be inserted for each recipient and it automatically stops the machine should the contents of a mail piece be incorrect. The DS-63 guarantees the integrity of your mail whatever the circumstances.

DS-63

YOUR MAIL MANAGEMENT PARTNER



Neopost strives to reduce the amount of carbon emissions released into the environment by utilizing sea versus air shipments wherever and whenever possible.

FEATURES

STANDARD

- Load'n Go® automatic settings
- flexFeed® multi-format feeder
- Multiple sheet feeding
- Full color touch screen
- Job wizard assistance
- Manual mail mode
- Secure'n Feed double detection
- Accumulate before folding
- Tip-to-tip sealing

OPTIONAL

- Catch tray, side exit
- Custom furniture
- Reading technology
 - Optical Mark Recognition (OMR)
- Output management software
- insert'n Mail™ mailing system integration



1 STATION



1.5 STATIONS



2 STATIONS



2.5 STATIONS

A choice of four configurations to cover all your mail management applications.

SPECIFICATIONS

DOCUMENT SPECIFICATIONS

Height	3.5" – 14" (4.5" – 14" if top feeder)
Width	5.1" – 9.1" (5.1" – 9.3" if not folding)
Weight	15 – 42.5 lbs. (15 – 62.5 lbs. if not folding)
Standard document sizes	Letter, legal, business reply envelope (BRE)
powerFold™ folding capacity	Up to 5 sheets (20 lb.)

INSERT/BRE SPECIFICATIONS

Height	3.5" – 6"
Width	5.1" – 9.1" (9.3" if not folding)
Paper Weight	20 – 32 lbs.

SET THICKNESS

Maximum	2mm
---------	-----

ENVELOPES

Length	3.5" – 6.35"
Width	6.3" – 9.7"
Standard envelope sizes	#10, 6" x 9.5"

FOLDING

Maximum capacity	5 sheets (20 lb.)
Fold types	Letter, z-fold, single, double parallel, no fold $\triangle \nabla \angle \llcorner _$

PERFORMANCE

Processing speed	Up to 2,200 envelopes/hour
Job memory	15

FEEDERS

Stations	Up to 2 flexFeeders + 1 insert feeder
Document feeder capacity	325 sheets (20 lb.)
Envelope feeder capacity	150

SYSTEM DIMENSIONS

Height	36"
Width	16.5"
Length	49"
Weight	165 lbs.

WHY CHOOSE NEOPOST?

Neopost SA is a world leader in mailing and logistics solutions. Our innovative solutions bring simplicity and efficiency to your mailing process to make your business run better. Neopost brilliantbasics benefits provide excellence in all our offers, from products to support and services. They bring you the best in operational efficiency, mail quality and security, budget optimization and online management. Whether for advice or support, you enjoy our commitment to supply first-class service – on the phone, on site, or online. Benefit from immediate response times and remote diagnosis at our call centers and fast dispatch of service engineers when needed.

neopost  **USA** 1-888-NEOPOST (636-7678)
www.neopostusa.com

Neopost® and the Neopost logo are registered trademarks of Neopost S.A. All other company and product names may be trademarks and are the property of their respective owners. All information in this document, including descriptions of features, functions, performance and specifications is subject to change without written notice at any time.



EAGLE Registrations Inc.
SERVICE • INTEGRITY • VALUE
ISO 14001 and OHSAS 18001
Registered by EAGLE Registrations Inc.