

DS-1200
G4i

Folder Inserter

The New Frontier in
Automation and Intelligence



Join us on



NEOPOST®

Send.Receive.Connect.

The New Frontier in Automation and Intelligence

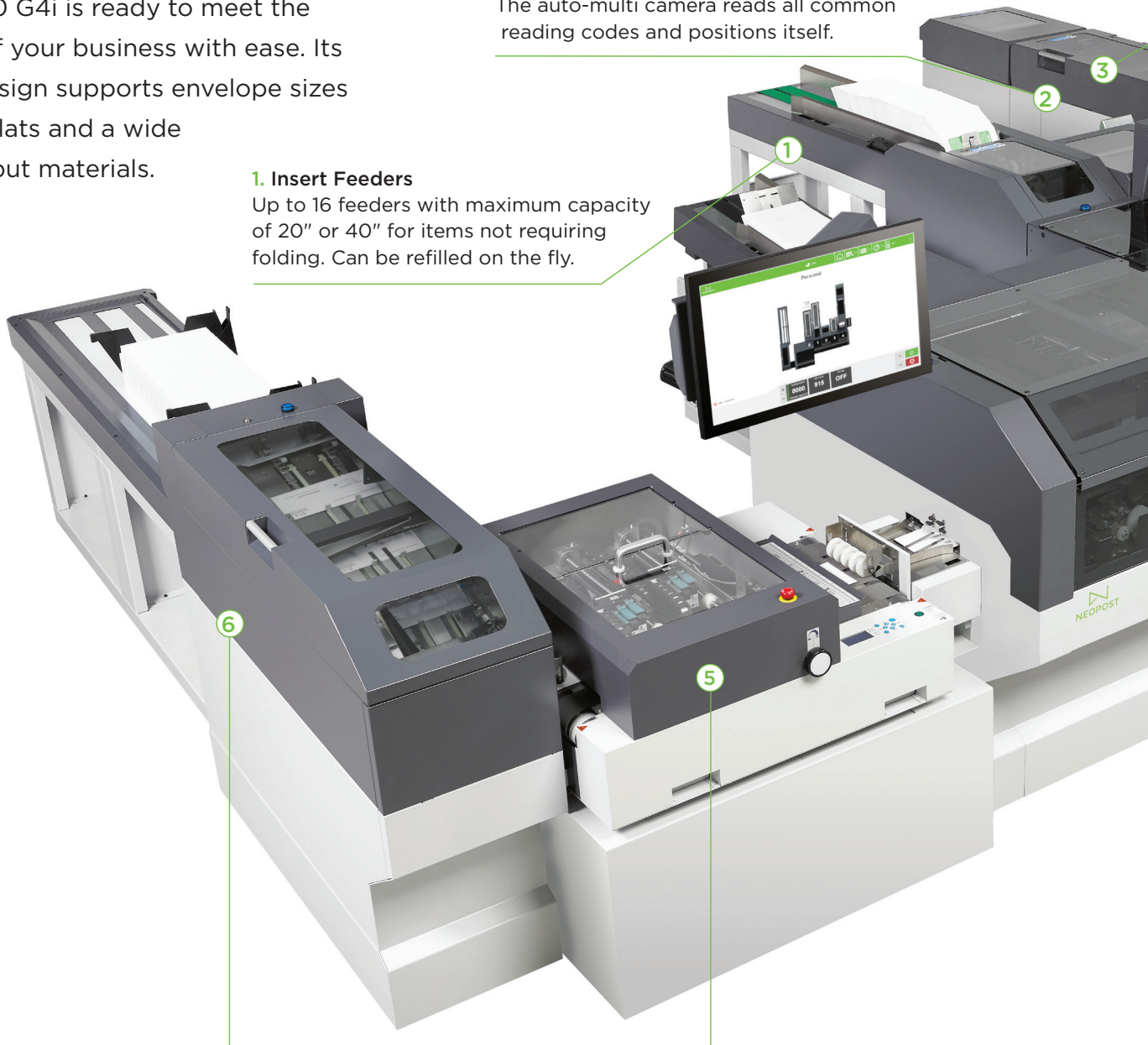
The DS-1200 G4i brings mail production centers up to the latest standards on productivity, intelligence and flexibility. Whether your applications are transactional, correspondence or marketing, the DS-1200 G4i is ready to meet the demands of your business with ease. Its modular design supports envelope sizes up to Full Flats and a wide range of input materials.

1. Insert Feeders

Up to 16 feeders with maximum capacity of 20" or 40" for items not requiring folding. Can be refilled on the fly.

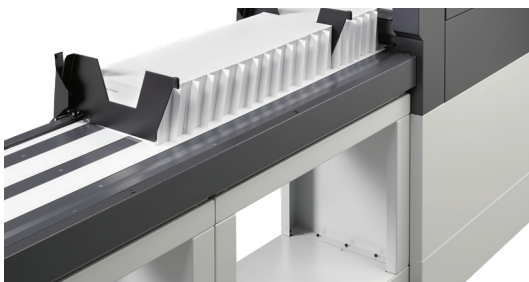
2. Automatic Camera Positioning

The auto-multi camera reads all common reading codes and positions itself.



6. Vertical Stacker for efficient output processing

High capacity on-edge stacking of filled envelopes, output with intelligent "Jog" function.



5. Output personalization with the Dynamic Envelope Printer

The DS-1200 G4i offers the ability to personalize every envelope. Data provided as part of the OMS/AIMS Closed Loop integrity process is used to print individual recipient details, return addresses, marketing slogans or pre-paid indicia on each envelope.

Our Integrated Integrity ensures that every printed envelope matches the addressed mail piece inside. Layouts and fonts in up to 600dpi can be designed to suit each application for a truly unique mail piece.

Other output options include Metering and Stamp affixing.

3. Sheet Feeder

Plug & Play secure, 5,000 sheet Mobile Trolley System.



4. Multiple Folders

Up to 16 folders can be placed in line to improve workflow. No pre-folding required.

High Capacity Mobile Trolley System

The unique trolleys enable secure and convenient transportation of up to 5000 sheets between printers and inserters. One-touch loading and Plug & Play offer maximum efficiency.



The multi-job mode runs multiple jobs in one batch without stops.

Automatic envelope size selection

The Full Format module is capable of inserting 72 sheets and up to 8 inserts in Full Flats.

In addition to running Full Flats only, the module can dynamically select the envelope size based on the page count, reading code or control data from the AIMS management system.



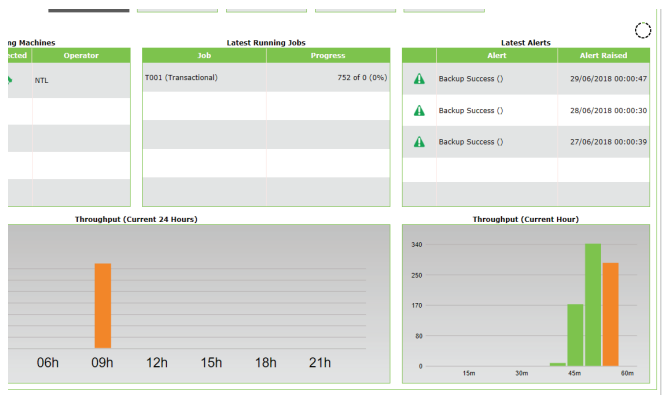
Together with a pack thickness up to 10 mm, the Full Format module significantly increases throughput and maximizes your return on investment.



Ease-of-use with Intelligent Mail Operating System

The IMOS Graphical User Interface reaches new heights in user friendliness and job programming.

Changing jobs takes just seconds, thanks to the automated setup that adjust tracks, guides, folds, envelopes, almost every part of the system at the touch of a button.



Integrated integrity with AIMS-100 onboard

The integrated AIMS-100 software records full details of each job and mailpiece.

It provides you with a real-time dashboard enabling you view the details of each job and to zoom in on all mail sets and document details.

Specifications

Processing speed	Up to 12,000 envelopes/hour Up to 33,000 sheets/hour
24" touch screen PC control (Windows 10)	Standard
Automatic job set up	Standard
Document feeder capacity	Up to 5,000 sheets
Insert feeder capacity	Up to 6,000 inserts
Envelope feeder capacity	#10 or 6" x 9.5" Up to 2,000 envelopes Flats up to 500 envelopes
Set thickness	#10 or 6" x 9.5" up to 8mm Flats up to 10mm
Collation after folding	Standard
Collation of inserts	Standard
Double feed detection Optical	Standard
Full modularity	Standard
Online help/remote assistance	Standard

Options

Accumulation before folding	Available
Optical Mark Recognition (OMR)	Available
Optical Character Recognition (OCR)	Available
Linear Barcode	Available
2D Data Matrix	Available
Double feed detection Mechanical	Available
Double feed detection Ultrasonic	Available
Closed loop verification	Available
Mailing system interface	Available
Stamp affixing	Available
Envelope printing	Available
Envelope sorting	Available



Choose Your Productivity Level

The DS-1200 G4i has been designed to optimize the practical speed of the system.

Available are several insertion and accumulation speed options and a wide range of high capacity input and output modules.

The high accumulation speed, of up to 33K sheets per hour, allow for the efficient processing of multi sheet applications.

About Neopost

NEOPOST is a global leader in mail solutions, business process management, customer experience management and parcel locker solutions. Its mission is to deliver reliable solutions that create relevant and personalized interactions.

With a direct presence in 29 countries and more than 5,800 employees, Neopost reported annual sales of €1.1 billion in 2017. Its products and services are sold in more than 90 countries.